

# **ALBRECHT ANGUS & WATSON ANGUS**

**30<sup>TH</sup> ANNUAL DRIVE-THRU OPEN-AIR  
REGISTERED BLACK ANGUS  
BULL SALE**

**SATURDAY, APRIL 25, 2020  
AT 1:00 PM CENTRAL TIME AT  
THE WATSON RANCH,  
20 MILES NORTH OF NORTH PLATTE,  
NEBRASKA ON HIGHWAY 97  
FOLLOW THE SIGNS ON SALE DAY!**



Dan & Melanie Albrecht  
20001 North Highway 97  
North Platte, NE 69101  
308-532-2883  
albrechtangus@hotmail.com  
www.albrechtangus.com

Robert & Lana Watson  
170 Watson Drive  
North Platte, NE 69101  
308-587-2520  
rlwatsonangus@hotmail.com  
www.watsoncattle.com

Focused on strong maternal instincts, excellent growth potential, and dispositions you can trust

Dear Fellow Cattlemen and Cattlewomen,

What a year it has been, and it's only April! We know that despite the restrictions due to the Coronavirus, getting your cattle bred successfully is an essential need for survival of the cattle producer. After much consideration, we have decided that providing our loyal customers and friends with dependable Angus bulls is a priority and we will make it happen, just in a "social-distancing" style!

This year's sale will be different, giving you the opportunity to drive by the bull pens to view the bulls and even bid from your vehicle, if you choose to do so. We will have seating around the outdoor sale ring and you may walk through the bulls before the sale, but we ask that you remain at least 6 feet away from people you did not travel with to the sale.

We are excited for the opportunity to offer you this group of bulls that are developed on performance oriented cows with genetics for docility and longevity. We pride ourselves on raising cattle that are easy to work, easy to grow, and easy to profit from. We are a family oriented cattle business and understand the importance of having cattle with strong maternal instincts, excellent growth potential, and dispositions we can trust. Our goal is to meet these objectives for our customers, as well as in our own herds. We look forward to seeing you, as we value your friendship as much as your business.

**Robert, Lana, Hannah, Hollianna, & Lane Watson ~ Watson Angus 308-587-2520**

**Dan & Melanie Albrecht ~ Albrecht Angus 308-532-2883**



### **Offering Over 40 Yearling Black Angus Bulls**

#### **Auctioneer**

Schow Auction Service 308-239-4669  
Kevin Schow 308-280-0340

#### **Veterinarian**

Stockman's Veterinary Clinic 308-532-7210

#### **Sale Day Phones**

Sale Facility 308-587-2520  
Dan Albrecht 308-530-0361  
Robert Watson 308-530-5614  
Jim Fuller 307-286-2527

#### **Fertility Exam**

Semen testing and scrotal measurements by Stockman's Veterinary Clinic, North Platte, NE. Bulls are guaranteed breeders and sell with fertility exam certificates.

#### **Herd Health**

All bulls are vaccinated at weaning for 7-Way Blackleg, Lepto 5, IBR, PI3, Hemophilus, BVD, BRSV, and Ivermectin.

The bulls are non-creep fed.

#### **Guarantee**

All bulls are guaranteed against **breeding** injury until September 1, 2020. If a replacement bull is available, he will be provided. If a replacement bull is not available, credit will be given in the following sale, less the salvage value of the injured bull. All injuries must be reported to Albrecht Angus upon injury **before** September 1, 2020 and prior to the injured bull being sold for salvage. This is not a mortality insurance policy nor does it cover mismanagement or neglect.

#### **Delivery**

Free bull delivery in the state of Nebraska.

#### **Terms, Conditions, & Announcements**

Terms of sale are cash or check. All bulls must be settled for on the day of the sale. Announcements made on sale day will take precedence over the catalog.

#### **Liability**

Albrecht Angus Ranch and Watson Angus Ranch assume no liability for accidents or injuries that occur on the sale premises.

#### **Lunch**

A complimentary lunch will be provided on sale day at the sale grounds.





**2020 Angus Sires**

All sires' pedigrees and EPDs are listed in the catalog with their progeny

Sire of Lots 1 & 2

**Thomas Big River 4081**

Reg # 17836370

Sire of Lots 3, 4, 5, 6 7, & 8

**HARB Hi Class 485 JH**

Reg # 18033734

Sire of Lots 9 & 10

**Mohnen Deadwood 1114**

Reg # 17843968

Sire of Lot 11

**Basin Payweight 1682**

Reg # 17038724

Sire of Lot 12

**S Chisum 6175**

Reg # 15511451

Sire of Lots 13, 14, 15, 16, 17, 18, & 19

**HARB PR Focus 214**

Reg # 18070439

Sire of Lot 20

**Hoover Homestead**

Reg # 17529337

Sire of Lots 21 & 22

**Vin-Mar O'Reilly Factor**

Reg # 16400429

Sire of Lot 23

**Connealy Consensus 7229**

Reg # 16447771

Sire of Lot 24

**Plattermere ND 471-B01**

Reg # 13980876

Sire of Lots 25 & 26

**SydGen Blacksmith 4010**

Reg # 17871732

Sire of Lot 27

**Connealy H6 427**

Reg # 14843156

Sire of Lot 28

**RB Black Ranger 458**

Reg # 17877012

Sire of Lot 29

**3F Epic 4631**

Reg # 17950219

Sire of Lots 30 & 31

**RB Tour of Duty 177**

Reg # 16984170

Sire of Lots 32, 33, & 34

**WA Hoover Dam 77 748**

Reg # 19074693

Sire of Lots 35, 36, & 37

**OCC Alternative 311**

Reg # 17685708

Sire of Lots 38, 39, 40, 41, & 42

**QLC VALOR X007 A018**

Reg # 17795176

Sire of Lots 43, 44, 45, 46, & 47

**7V Exclusive Paxton 725C**

Reg # 18383570





## SIRE DATA

### Thomas Big River 4081



Sire for Lots 1 & 2

Reg # 17836370      Tattoo: 4081      DOB: 01/28/2014

Mytty In Focus

A A R Ten X 7008 S A

A A R Lady Kelton 5551

Thomas Big River 4081

Summitcrest Complete 1P55

Thomas Carol 2062

Thomas Carol 7595

| CED | BW   | WW   | YW   | SC    | Milk | CW  | Marb | RE  |
|-----|------|------|------|-------|------|-----|------|-----|
| +2  | +2.7 | +73  | +131 | +1.25 | +21  | +56 | +58  | +70 |
| \$W |      | \$F  | \$G  | \$B   |      |     |      |     |
| +68 |      | +114 | +52  | +166  |      |     |      |     |

This sire was the \$50,000 top seller of the Fall, 2014 sale at Thomas Angus Ranch in Oregon. Big River ranks among the top 3% of the angus population for weaning weight EPD, yearling weight EPD, and \$Weaned calf value index, ranking among the elite top 5% for hot carcass weight EPD, \$Feedlot value index, and \$Beef value index.

## LOT 2

### WA Big River 457

Reg # 19708498      BW: 92 pounds      DOB: 2/14/2019      Tat: 914

SIRE: Thomas Big River 4081 (AAA #17836370) see sire data

Summitcrest Complete 1P55

KM Broken Bow 002

Summitcrest Princess 0P12

DAM: Dickaus BB K205 457

Nichols Extra K205

Dickaus K205 Ent 898

Dickaus Ent PE 0089

| CED | BW   | WW  | YW   | Milk | CW | Marb | RE |
|-----|------|-----|------|------|----|------|----|
| +0  | +3.3 | +66 | +117 | +24  |    |      |    |
| \$W |      | \$F | \$G  | \$B  |    |      |    |
| +59 |      | +89 |      |      |    |      |    |

This is a cow bull prospect with outstanding growth potential!  
Actual weaning weight on 10/19/19 at 690 pounds.

## LOT 1

### WA Big River 84

Reg # 19708486      BW: 88 pounds      DOB: 2/16/2019      Tat: 919

SIRE: Thomas Big River 4081 (AAA #17836370) see sire data

B/R New Design 036

Lemmon Newline C804

White Fence Pride H1

DAM: 7V Ms Newline 84

Whitestone Widespread MB

7V Widespread T 018

Rocking Seven V Erica 102

| CED | BW   | WW  | YW   | Milk | CW  | Marb | RE  |
|-----|------|-----|------|------|-----|------|-----|
| -3  | +4.0 | +67 | +115 | +23  | +37 | +43  | +50 |
| \$W |      | \$F | \$G  | \$B  |     |      |     |
| +58 |      | +99 | +43  | +142 |     |      |     |

This is a cow bull prospect with outstanding growth potential!  
Actual weaning weight on 10/19/19 at 690 pounds.

## Lot 1

### WA Big River 84



## Lot 2

### WA Big River 457





## SIRE DATA

### HARB Hi Class 485 JH

Sire for Lots 3, 4, 5, 6, 7, & 8

Reg # 18033734 Tattoo: 485 DOB: 2/25/2014

Leachman Right Time

HARB Stur-D 191 JH

H A R B Black Lady 073 JH

HARB Hi Class 485 JH

S A V 8180 Traveler 004

HARB Frances 770 JH

H A R B Frances Erica 180 SH

| CED | BW   | WW  | YW   | SC  | Milk | CW  | Marb | RE   |
|-----|------|-----|------|-----|------|-----|------|------|
| +10 | +0.4 | +59 | +97  | +21 | +34  | +43 | +.31 | +.22 |
| \$W | \$F  | \$G | \$B  |     |      |     |      |      |
| +73 | +73  | +30 | +103 |     |      |     |      |      |

Bull purchased by Watson Angus from Harrison Angus in Boyd, Montana. Offers calving ease and excellent weaning potential to his progeny.

## LOT 3

### WA Hi Class 50

Reg # 19708495 BW: 72 pounds DOB: 3/22/2019 Tat: 946

SIRE: HARB Hi Class 485 JH (AAA #18033734) see sire data

Hoover Dam

Garret's Hoover Dam 6512

Pine Tree First Lady 651

DAM: WA Miss Lucky Lou 50 7114

Mytty In Focus

GOA MYTTY Ethel T114

SUA LC of Ethel 4232P

| CED | BW   | WW  | YW   | Milk | CW  | Marb | RE   |
|-----|------|-----|------|------|-----|------|------|
| +14 | -2.0 | +48 | +84  | +27  | +36 | +.42 | +.24 |
| \$W | \$F  | \$G | \$B  |      |     |      |      |
| +56 | +75  | +36 | +111 |      |     |      |      |

Weaned at 540 pounds.

## LOT 4

### WA Hi Class 97

Reg # 19708487 BW: 80 pounds DOB: 4/22/2019 Tat: 969

SIRE: HARB Hi Class 485 JH (AAA #18033734) see sire data

Sitz Traveler 8180

S A V Final Answer 0035

S A V Emulous 8145

DAM: WA 7119 Ebony 97

Mytty In Focus

GOA MYTTY Hilda T119

Suaexpectation of Hilda 5560

| CED | BW   | WW  | YW   | Milk | CW  | Marb | RE   |
|-----|------|-----|------|------|-----|------|------|
| +10 | +0.8 | +62 | +104 | +30  | +33 | +.42 | +.27 |
| \$W | \$F  | \$G | \$B  |      |     |      |      |
| +73 | +81  | +36 | +117 |      |     |      |      |

Weaned at 566 pounds.

## LOT 5

### WA Hi Class 101

Reg # 19708488 BW: 84 pounds DOB: 2/28/2019 Tat: 928

SIRE: HARB Hi Class 485 JH (AAA #18033734) see sire data

Connealy Front Page 0228

Kesslers Frontman R001

Kesslers Bell 0024

DAM: WA 94 Yvonne 101

B/R Magnum 399-5128

WA 7105 Echo 94

GOA Prem Beef Lass T105

| CED | BW   | WW  | YW   | Milk | CW  | Marb | RE   |
|-----|------|-----|------|------|-----|------|------|
| +7  | +1.2 | +58 | +97  | +31  | +33 | +.33 | +.33 |
| \$W | \$F  | \$G | \$B  |      |     |      |      |
| +68 | +77  | +33 | +110 |      |     |      |      |

Weaned at 676 pounds.

## Lot 5

### WA Hi Class 101



## LOT 6

### WA Hi Class 405

Reg # 19708497 BW: 80 pounds DOB: 4/24/2019 Tat: 970

SIRE: HARB Hi Class 485 JH (AAA #18033734) see sire data

KG 5594 Traveler 3020

W R A Vindicator W2

W R A Eileen Bar 115P

DAM: WA Carmen's Vindicator 405

Woodlawn New Limit 23

W A Boyd's Amethyst 5

WA Widespread Amorette 312

| CED | BW   | WW  | YW   | Milk | CW  | Marb | RE   |
|-----|------|-----|------|------|-----|------|------|
| +5  | +0.7 | +52 | +89  | +31  | +33 | +.37 | +.19 |
| \$W | \$F  | \$G | \$B  |      |     |      |      |
| +62 | +69  | +33 | +102 |      |     |      |      |

Weaned at 500 pounds.



### LOT 7

#### WA Hi Class 449

Reg # 19708499 BW: 80 pounds DOB: 3/6/2019 Tat: 932  
SIRE: **HARB Hi Class 485 JH (AAA #18033734)** see sire data

*Connealy Product 568*  
*Connealy Final Product*  
*Ebonista of Conanga 471*

**DAM: Dickaus FP LO 449**  
*Connealy Lead On*  
*Dickaus LO PFD 4031*  
*Dickaus Pfred Stack 1016*

| CED | BW   | WW  | YW  | Milk | CW | Marb | RE |
|-----|------|-----|-----|------|----|------|----|
| +6  | +1.0 | +54 | +94 | +28  |    |      |    |
| \$W | \$F  | \$G | \$B |      |    |      |    |
| +59 | +69  |     |     |      |    |      |    |

Weaned at 600 pounds.

### LOT 8

#### WA Hi Class 600

Reg # 19709042 BW: 78 pounds DOB: 3/13/2019 Tat: 936  
SIRE: **HARB Hi Class 485 JH (AAA #18033734)** see sire data

*Connealy Confidence0100*  
*Connealy Courage 25L*  
*Pearl Pammy of Conanga 194*

**DAM: WA Miss Dakota Courage 600**  
*B/R Foresight 782*  
*WA Black Bonnie 416 97*  
*WA 7119 Ebony 97*

| CED | BW    | WW  | YW  | Milk | CW | Marb | RE |
|-----|-------|-----|-----|------|----|------|----|
| +12 | +0.02 | +53 | +92 | +30  |    |      |    |
| \$W | \$F   | \$G | \$B |      |    |      |    |
| +60 | +70   |     |     |      |    |      |    |

Weaned at 555 pounds.

### LOT 9

#### WA Deadwood 610

Reg # 19709043 BW: 78 pounds DOB: 2/15/2019 Tat: 915  
SIRE: **Mohnen Deadwood 1114 (AAA #17843968)** see sire data

*Connealy Confidence 0100*  
*Connealy Courage 25L*  
*Pearl Pammy of Conanga 194*

**DAM: WA Miss Daniella Courage 610**  
*PA Power Tool 9108*  
*Dickaus PT ENF 440*  
*Dickaus Enf Focus*

| CED | BW   | WW  | YW   | Milk | CW | Marb | RE |
|-----|------|-----|------|------|----|------|----|
| +10 | +0.6 | +51 | +101 | +31  |    |      |    |
| \$W | \$F  | \$G | \$B  |      |    |      |    |
| +54 | +84  |     |      |      |    |      |    |

Weaned at 580 pounds.



### SIRE DATA

#### Mohnen Deadwood 1114



#### Sire for Lots 9 & 10

Reg # 17843968 Tattoo: 1114 DOB: 01/12/2014  
*Mohnen Density 730*  
*Mohnen South Dakota 402*  
*Mohnen Jilt 539*  
**Mohnen Deadwood 1114**  
*TC Total 410*  
*Mohnen Blackbird 2069*  
*Baldrige Blackbird M565*

| CED | BW   | WW  | YW   | SC    | Milk | CW  | Marb | RE  |
|-----|------|-----|------|-------|------|-----|------|-----|
| +7  | +1.6 | +57 | +108 | +1.32 | +31  | +39 | +89  | +41 |
| \$W | \$F  | \$G | \$B  |       |      |     |      |     |
| +60 | +91  | +60 | +151 |       |      |     |      |     |

This sire was the \$38,000 top seller of the Fall, 2014 sale at Mohnen Angus Ranch in South Dakota. Produces big bodied, excellent uddered daughters and high gaining sons.

### LOT 10

#### WA Deadwood 645

Reg # 19711377 BW: 70 pounds DOB: 2/13/2019 Tat: 913  
SIRE: **Mohnen Deadwood 1114 (AAA #17843968)** see sire data

*Connealy Consensus 7229*  
*Connealy Comrade 1385*  
*Happy Gee of Conanga 919*

**DAM: WA Miss Diana Comrade 645**  
*S A V Iron Mountain 8066*  
*WA Mountain's Zendaya 5 25*  
*WA Boyd's Amethyst 5*

| CED | BW  | WW  | YW   | Milk | CW | Marb | RE |
|-----|-----|-----|------|------|----|------|----|
| +7  | +0  | +57 | +101 | +26  |    |      |    |
| \$W | \$F | \$G | \$B  |      |    |      |    |
| +59 | +81 |     |      |      |    |      |    |

Weaned at 635 pounds.





**SIRE DATA**  
**Basin Payweight 1682**



**Sire for Lot 11**

Reg # 17038724      Tattoo: 1682      DOB: 02/2011  
 Vermillion Payweight J847  
 Basin Payweight 006S  
 Basin Lucy 3829  
 Basin Payweight 1682  
 HARB Pendleton 765 J H  
 21AR O Lass 7017  
 21AR O lass F24A

| CED | BW   | WW  | YW   | SC    | Milk | CW  | Marb  | RE    |
|-----|------|-----|------|-------|------|-----|-------|-------|
| +7  | +0.6 | +67 | +119 | +1.01 | +32  | +54 | +0.63 | +0.24 |
| \$W | \$F  | \$G | \$B  |       |      |     |       |       |
| +96 | +100 | +42 | +141 |       |      |     |       |       |

Among the top 10 sires of progeny registered in the 2019 AAA fiscal year after being ranked Number 4 in 2018 and Number 6 in 2017, even though demand for his semen has often been much larger than the available inventory for several years, this high volume, easy fleshing individual is one of the bulls that cattlemen have come to desire.

**LOT 11**

**WA Payweight 7105-680**

Reg # 19708491      BW: 68 pounds      DOB: 2/27/2019      Tat: 930  
**SIRE: Basin Payweight 1682 (AAA #19708491)** see sire data

G A R Precision 1680  
 G A R US Premium Beef  
 G A R Ext 2928

**DAM: GOA Prem Beef Lass T105**

G A R New Design 5050  
 SUA New Design of Lass 5534  
 S U A Fame Pride 0139

| CED | BW   | WW  | YW   | Milk | CW  | Marb | RE  |
|-----|------|-----|------|------|-----|------|-----|
| +10 | -0.6 | +51 | +90  | +27  | +40 | +56  | +39 |
| \$W | \$F  | \$G | \$B  |      |     |      |     |
| +58 | +83  | +43 | +126 |      |     |      |     |

Weaned at 600 pounds.



**SIRE DATA**  
**S Chisum 6175**



**Sire for Lot 12**

Reg # 15511451      Tattoo: 6175      DOB: 03/31/2006  
 Paws Up Alliance  
 S Alliance 3313  
 Paws Up 9048 Emulation EXT  
 S Chisum 6175  
 S Eclipse 169  
 S Gloria 464  
 S Gloria 209

| CED | BW   | WW  | YW   | SC    | Milk | CW  | Marb  | RE    |
|-----|------|-----|------|-------|------|-----|-------|-------|
| +3  | +3.1 | +65 | +110 | +0.89 | +20  | +62 | +0.17 | +0.69 |
| \$W | \$F  | \$G | \$B  |       |      |     |       |       |
| +79 | +102 | +27 | +129 |       |      |     |       |       |

Popular AI sire of Spickler Ranch in North Dakota. Yields calves with notable yearling growth and length.

**LOT 12**

**WA Chisum 4082**

Reg # 19709818      BW: 82 pounds      DOB: 2/16/2019      Tat: 918  
**SIRE: S Chisum 6175 (AAA #15511451)** see sire data

LCC New Standard  
 Dickaus New Muscle 934  
 Dickaus MM ENT 789

**DAM: Dickaus NM Any 4082**

Dr J Analyst M250  
 Dickaus Any Focus 976  
 Dickaus IF Bando 629

| CED | BW   | WW  | YW  | Milk | CW | Marb | RE |
|-----|------|-----|-----|------|----|------|----|
| +4  | +1.9 | 60  | 102 | +21  |    |      |    |
| \$W | \$F  | \$G | \$B |      |    |      |    |
| +57 | +74  |     |     |      |    |      |    |

Weaned at 640 pounds.





## SIRE DATA

### HARB PR Focus 214

Sire for Lot 13, 14, 15, 16, 17, 18, & 19

Reg # 18070439 Tattoo: 214 DOB: 3/18/2014

Mytty In Focus

Paintrock IN Focus 91-8

Kate of Paintrock 437-6

HARB PR Focus 214

Connealy Right Answer 746

H A R B Miss Bruty 917

H A R B Miss Bruty 309

| CED | BW   | WW  | YW   | SC    | Milk | CW  | Marb | REA  |
|-----|------|-----|------|-------|------|-----|------|------|
| +14 | -2.0 | +54 | +93  | +1.25 | +28  | +43 | +.48 | +.25 |
| \$W | \$F  | \$G | \$B  |       |      |     |      |      |
| +62 | +91  | +40 | +130 |       |      |     |      |      |

Bull purchased by Watson Angus from Harrison Angus Ranch, Boyd Montana. This bull is an excellent calving ease bull with the added bonus of growth and carcass value! Profitable herd sire.

## LOT 13

### WA Premium Focus 503

Reg # 19708504 BW: 82 pounds DOB: 3/25/2019 Tat: 952

SIRE: HARB PR Focus 214 (AAA #18070439) see sire data

TC Aberdeen 759

TR Mr Aberdeen 1068Y

TR Ms Erica 8035U

DAM: WA Miss Aberdeen Lass 503

G A R US Premium Beef

GOA Prem Beef Lass T105

SUA New Design of Lass 5534

| CED | BW   | WW  | YW  | Milk | CW | Marb | RE |
|-----|------|-----|-----|------|----|------|----|
| +7  | +0.7 | +51 | +91 | +27  |    |      |    |
| \$W | \$F  | \$G | \$B |      |    |      |    |
| +53 | +78  |     |     |      |    |      |    |

Weaned at 565 pounds.

## LOT 14

### WA Premium Focus 534

Reg # 19709041 BW: 80 pounds DOB: 3/16/2019 Tat: 939

SIRE: HARB PR Focus 214 (AAA #18070439) see sire data

Hoover Dam

Garret's Hoover Dam 6512

Pine Tree First Lady 651

DAM: WA Miss Carnation HD 534

Kesslers Frontman R001

WA 94 Yvonne 101

WA 7105 Echo 94

| CED | BW   | WW  | YW  | Milk | CW | Marb | RE |
|-----|------|-----|-----|------|----|------|----|
|     | -1.1 | +52 |     | +26  |    |      |    |
| \$W | \$F  | \$G | \$B |      |    |      |    |
|     |      |     |     |      |    |      |    |

Weaned at 595 pounds.

## LOT 15

### WA Premium Focus 658

Reg # 19711378 BW: 74 pounds DOB: 2/12/2019 Tat: 908

SIRE: HARB PR Focus 214 (AAA #18070439) see sire data

Connealy Confidence 0100

Connealy Courage 25L

Pearl Pammy of Conanga

DAM: WA Miss Dixie Courage 658

Connealy Final Product

Dickaus FP LO 4053

Dickaus LO Ent 1019

| CED | BW   | WW  | YW  | Milk | CW | Marb | RE |
|-----|------|-----|-----|------|----|------|----|
| +13 | -0.8 | +58 | +94 | +28  |    |      |    |
| \$W | \$F  | \$G | \$B |      |    |      |    |
| +67 | +72  |     |     |      |    |      |    |

Weaned 10/19/2019 at 670 pounds.

## LOT 16

### WA Premium Focus 669

Reg # 19708496 BW: 82 pounds DOB: 2/11/2019 Tat: 903

SIRE: HARB PR Focus 214 (AAA #18070439) see sire data

HARB Stur-D 191 JH

HARB Hi Class 485 JH

HARB Frances 770 JH

DAM: WA Classy Dawn 669

B/R Foresight 782

WA Sandy Belle 417

J D Sandy Pride 4117

| CED | BW   | WW  | YW  | Milk | CW | Marb | RE |
|-----|------|-----|-----|------|----|------|----|
| +8  | +0.8 | +51 | +87 | +28  |    |      |    |
| \$W | \$F  | \$G | \$B |      |    |      |    |
| +56 | +72  |     |     |      |    |      |    |

Weaned at 610 pounds.

## Lot 16

### WA Premium Focus 669





**LOT 17**

**WA Premium Focus 686**

Reg # 19708494 BW: 68 pounds DOB: 4/02/2019 Tat: 957  
**SIRE: HARB PR Focus 214 (AAA #18070439) see sire data**

HARB Stur-D 191 JH  
 HARB Hi Class 485 JH  
 HARB Frances 770 JH

**DAM: WA Classy Destiny 686**

Mytty In Focus  
 GOA MYTTY Hilda T119  
 Suaexpectation of Hilda 5560

| CED | BW   | WW  | YW  | Milk | CW | Marb | RE |
|-----|------|-----|-----|------|----|------|----|
| +15 | -2.4 | +50 | +85 | +28  |    |      |    |
| \$W | \$F  | \$G | \$B |      |    |      |    |
| +60 | +71  |     |     |      |    |      |    |

Weaned at 510 pounds.

**LOT 18**

**WA Premium Focus 4026**

Reg # 19708493 BW: 76 pounds DOB: 4/04/2019 Tat: 961  
**SIRE: HARB PR Focus 214 (AAA #18070439) see sire data**

B/R New Day 454  
 V A R Reserve 1111  
 Sandpoint Blackbird 8809

**DAM: Dickaus Res Focus 4026**

Dickaus Focus Now 610  
 Dickaus Focus H6 9061  
 Dickaus Extra Trend 470

| CED | BW   | WW  | YW  | Milk | CW | Marb | RE |
|-----|------|-----|-----|------|----|------|----|
| +12 | -1.1 | +47 | +83 | +24  |    |      |    |
| \$W | \$F  | \$G | \$B |      |    |      |    |
| +49 | +72  |     |     |      |    |      |    |

Weaned at 525 pounds.

**LOT 19**

**WA Premium Focus 4097**

Reg # 19708503 BW: 78 pounds DOB: 4/2/2019 Tat: 958  
**SIRE: HARB PR Focus 214 (AAA #18070439) see sire data**

Nichols Extra K205  
 Dickaus Extra Ext 895  
 Dickaus Ext Val 882

**DAM: Dickaus EE Dir 4097**

S A F Directive  
 Dickaus Dir 726  
 Dickaus 4 point 8 PD 596

| CED | BW   | WW  | YW   | Milk | CW  | Marb | RE  |
|-----|------|-----|------|------|-----|------|-----|
| +10 | -0.6 | +54 | +93  | +25  | +38 | +37  | +27 |
| \$W | \$F  | \$G | \$B  |      |     |      |     |
| +57 | +90  | +35 | +125 |      |     |      |     |

Weaned at 585 pounds.



**SIRE DATA**

**Hoover Homestead**



**Sire for Lots 20**

Reg # 17529337 Tattoo: L407 DOB: 8/07/2012

Basin Expedition R156  
 Basin Excitement  
 Basin Lady S532 AK

Hoover Homestead

Hoover G Force  
 Miss Blackbird Ellston J407  
 Miss Blackbird Ellston D471

| CED | BW   | WW  | YW  | SC  | Milk | CW  | Marb | RE  |
|-----|------|-----|-----|-----|------|-----|------|-----|
| +10 | -0.5 | +46 | +86 | +69 | +22  | +32 | +27  | +68 |
| \$W | \$F  | \$G | \$B |     |      |     |      |     |
| +47 | +64  | +33 | +97 |     |      |     |      |     |

This sire is moderate, easy fleshing, deep bodied and stout! With a 15.5" ribeye, he was the largest scanning ribeye of his crop from Hoover Angus Farms in Iowa.

**LOT 20**

**WA Homestead 716**

Reg # 19708501 BW: 55 pounds DOB: 1/30/2019 Tat: 90  
**SIRE: Hoover Homestead (AAA #17529337) see sire data**

HARB Stur-D 191 JH  
 HARB Hi Class 485 JH  
 HARB Frances 770 JH

**DAM: WA Miss Classy Pammy 716**

HA Program 5652  
 Dickaus PM Eff 4044  
 Dickaus Eff Pro 142

| CED | BW   | WW  | YW   | Milk | CW  | Marb | REA |
|-----|------|-----|------|------|-----|------|-----|
| +14 | -2.3 | +52 | +90  | +27  | +37 | +37  | +62 |
| \$W | \$F  | \$G | \$B  |      |     |      |     |
| +62 | +70  | +39 | +109 |      |     |      |     |

This bull looks to be a sure shot heifer bull with a 55 pound birth weight and his -2.3 Birth EPD. Weaned 10/19/2019 at 610 pounds. Dam is a first calf heifer.





**SIRE DATA**  
**Vin-Mar O'Reilly Factor**



**Sire for Lots 21 & 22**

Reg # 16400429      Tattoo: 9563      DOB: 2/05/2009  
 Sitz Traveler 8180  
 S A V Final Answer 0035  
 SAV Emulous 8145  
 Vin-Mar O'Reilly Factor  
 Circle A 216 LTD 9374  
 Vin-Mar Edella 2827  
 R R Edella Pursuit 5827

| CED | BW   | WW  | YW   | SC   | Milk | CW  | Marb | RE   |
|-----|------|-----|------|------|------|-----|------|------|
| +8  | +0.5 | +56 | +109 | +.36 | +28  | +46 | +.26 | +.48 |
| \$W | \$F  | \$G | \$B  |      |      |     |      |      |
| +58 | +117 | +35 | +152 |      |      |     |      |      |

High-selling bull of the 2010 Vin-Mar Cattle sale at \$27,000 to Bush Angus, Britton, SD, and JAC'S Ranch, Bentonville, AR. This powerful herdsire covers all the bases and is backed by an outstanding cow. WW ratio 116, YW ratio 127, with 118 contemporaries! 38 cm scrotal, 15.0 inch REA to Ratio 115 and 4.09 %IMF.

**LOT 21**  
**WA O'Reilly Factor 439**

Reg # 19708489      BW: 74 pounds      DOB: 2/09/2019      Tat: 902  
 SIRE: Vin-Mar O'Reilly Factor (AAA #16400429) see sire data

G A R Predestined  
 PA Power Tool 9108  
 Shamrock Beebee Focus 997  
**DAM: Dickaus PT ENF 439**  
 Dickaus Entense Focus 997  
 Dickaus Enf Focus 289  
 Dickaus Focus Cash 934

| CED | BW   | WW  | YW  | Milk | CW | Marb | REA |
|-----|------|-----|-----|------|----|------|-----|
| +10 | -0.2 | +47 | +92 | +28  |    |      |     |
| \$W | \$F  | \$G | \$B |      |    |      |     |
| +49 | +86  |     |     |      |    |      |     |

Weaned at 590 pounds.

**LOT 22**

**WA O'Reilly Factor 7114**

Reg # 19708492      BW: 62 pounds      DOB: 2/12/2019      Tat: 911  
 SIRE: Vin-Mar O'Reilly Factor (AAA #16400429) see sire data

S A F Focus of ER  
 Mytty In Focus  
 Mytty Countess 906  
**DAM: GOA MYTTY Ethel T114**  
 Larks Canyon 74D4  
 SUA LC of Ethel 4232P  
 S U A 616 Ethel 02

| CED | BW   | WW  | YW   | Milk | CW  | Marb | REA  |
|-----|------|-----|------|------|-----|------|------|
| +15 | -2.6 | +40 | +78  | +25  | +38 | +.35 | +.31 |
| \$W | \$F  | \$G | \$B  |      |     |      |      |
| +43 | +88  | +35 | +123 |      |     |      |      |

Weaned at 510 pounds.

*Thank you to all our friends and family who have helped in the preparations for this bull sale! From advertising to setup, from preparing the bulls to preparing the meal, sale day could not be accomplished without the help of the good people around us!*

*Thank you again,  
 Dan and Melanie Albrecht*

*Robert, Lana, Hannah, Hollianna, and Lane Watson*

**Lot 21      WA O'Reilly Factor 439**





### SIRE DATA

## Connealy Consensus 7229



### Sire for Lots 23

Reg # 16447771 Tattoo: 9122 DOB: 1/15/2009

KMK Alliance 6595 187

Connealy Consensus

Blinda of Conanga 004

Connealy Consensus 7229

Woodhill Admiral 77K

Blue Lilly of Conanga 16

Blue Cash of Conanga 6020

| CED | BW   | WW  | YW   | SC  | Milk | CW  | Marb | RE  |
|-----|------|-----|------|-----|------|-----|------|-----|
| +6  | +1.9 | +55 | +93  | +77 | +22  | +25 | +87  | +36 |
| \$W | \$F  | \$G | \$B  |     |      |     |      |     |
| +69 | +58  | +62 | +119 |     |      |     |      |     |

The Number 1 sire of progeny registered by the American Angus Association in 2014, Number 2 in 2015 and Number 3 in 2013, this widely used and highly respected sire of females has been among the Top 25 sires for progeny registered for the past five years to rank Number 2 among all sires that ranked in the Top 25 over the five years from 2013 through 2017.

### LOT 23

## WA Consensus 407

Reg # 19708490 BW: 86 pounds DOB: 2/24/2019 Tat: 924

SIRE: Connealy Consensus 7229 (AAA #16447771) see sire data

G A R Predestined

PA Power Tool 9108

Shamrocks Beebee Queen 3095

DAM: Dickaus PT ENF 407

Dickaus Entense Focus 997

Dickaus Enf Imp 274

Dickaus Imp Ow 986

| CED | BW   | WW  | YW   | Milk | CW  | Marb | REA |
|-----|------|-----|------|------|-----|------|-----|
| +6  | +2.2 | +56 | +96  | +27  | +28 | +84  | +46 |
| \$W | \$F  | \$G | \$B  |      |     |      |     |
| +59 | +65  | +61 | +126 |      |     |      |     |

Weaned at 680 pounds.



### SIRE DATA

## Plattemere ND 471-B01

### Sire for Lot 24

Reg # 13980876

Tattoo: 471

DOB: 2/14/2001

V D A R New Trend 315

B/R New Design 036

B/R Blackcap Empress 76

Plattemere ND 471-B01

G T Maximum

Plattemere Queenie 456

Plattemere Queenie 359

| CED | BW   | WW  | YW   | SC  | Milk | CW  | Marb | RE  |
|-----|------|-----|------|-----|------|-----|------|-----|
| +11 | -1.3 | +34 | +71  | +82 | +17  | +22 | +69  | +49 |
| \$W | \$F  | \$G | \$B  |     |      |     |      |     |
| +23 | +83  | +56 | +139 |     |      |     |      |     |

This sire bred by Snyder Brothers in Paxton, Nebraska. Offers notable calving ease EPDs.

### LOT 24

Lot 24 is an Unregistered Purebred Commercial Angus Bull sired by Plattemere ND 471 B01.

## WA COMMERCIAL

### Plattemere 4436 929

Reg # NA BW: 80 pounds DOB: 2/28/2019 Tattoo: 929

SIRE: Plattemere ND 471 B01 (see sire data)

GDAR Game Day 449

Sitz Superior 10971

Sitz RSL Eisa Evergreen 5279

DAM: Dickaus Sup 4144 4436

Connealy Lead On

Dickaus Lead ON EM 2010

Dickaus Em Scotch 384

Purebred Unregistered Black Angus Bull.

Weaning weight on 10/19/2019 of 525 pounds.

### Lot 23

### WA Consensus 407





## SIRE DATA

### SydGen Blacksmith 4010



### Sire for Lots 25 & 26

Reg # 17871732      Tattoo: 4010      DOB: 12/27/2013

B/R Ambush 28

2 Bar Deaf Smith

2 Bar 5050 New Design 8050

SydGen Blacksmith 4010

SydGen Contract 9410

SydGen June 1239

SydGen June 7600

| CED | BW   | WW   | YW   | SC   | Milk | CW  | Marb  | RE  |
|-----|------|------|------|------|------|-----|-------|-----|
| +13 | -1.3 | +53  | +109 | +30  | +30  | +52 | +1.14 | +88 |
| \$W |      | \$F  | \$G  | \$B  |      |     |       |     |
| +61 |      | +119 | +85  | +204 |      |     |       |     |

This sire is the \$25,000 top selling bull calf in SydGen's 2014 bull sale. He then checked in with a 4.65 ADG to post the number one ADG period yearling weight in his contemporary group.

## LOT 25

### WA Blacksmith 447

Reg # 19708500      BW: 84 pounds      DOB: 2/22/2019      Tat: 923

SIRE: SydGen Blacksmith 4010 (AAA #17871732) see sire data

B/R New Day 454

V A R Reserve 1111

Sandpoint Blackbird 8809

DAM: Dickaus Res Cash 447

Dickaus Extra Cash 329

Dickaus Cash Ent 959

Dickaus Ent C5204 278

| CED | BW   | WW  | YW   | Milk | CW  | Marb | RE  |
|-----|------|-----|------|------|-----|------|-----|
| +7  | +0.9 | +53 | +100 | +26  | +37 | +86  | +68 |
| \$W |      | \$F | \$G  | \$B  |     |      |     |
| +53 |      | +96 | +68  | +163 |     |      |     |

Weaned at 650 pounds.

## LOT 26

### WA Blacksmith 724

Reg # 19708502      BW: 76 pounds      DOB: 2/02/2019      Tat: 95  
SIRE: SydGen Blacksmith 4010 (AAA #17871732) see sire data

HARB Efficient 819 JH

HARB RCA Efficient 23 JH

H A R B RCA Princess Vel 03

DAM: WA Yasmina's Girl 724 106

E & B National 618

WA National Yasmina 583 106

WA Classic Aurora 583

| CED | BW   | WW  | YW  | Milk | CW  | Marb | RE  |
|-----|------|-----|-----|------|-----|------|-----|
| +5  | +2.2 | +47 | +91 | +27  | +40 | +70  | +56 |
| \$W |      | \$F | \$G | \$B  |     |      |     |
| +45 |      | +93 | +57 | +150 |     |      |     |

Weaned at 550 pounds. Dam is a first calf heifer.



## SIRE DATA

### Connealy H6 427

### Sire for Lot 27

Reg # 14843156      Tattoo: 4125      DOB: 1/26/2004

N Bar Emulation EXT

Nichols Extra H6

Nichols Eileen May F261

Connealy H6 427

O G L Battle Cry 427 128

Thoda of Conanga 4423

Ruth Anne of Conanga

| CED | BW   | WW  | YW  | SC   | Milk | CW  | Marb | REA |
|-----|------|-----|-----|------|------|-----|------|-----|
| +6  | +2.0 | +34 | +75 | +1.1 | +24  | +28 | +24  | +08 |
| \$W |      | \$F | \$G | \$B  |      |     |      |     |
| +26 |      | +79 | +28 | +107 |      |     |      |     |

## LOT 27

Lot 27 is an Unregistered Purebred Commercial  
Angus Bull sired by Connealy H6 427.

### WA COMMERCIAL H6 27 974

Reg # NA      BW: 72 pounds      DOB: 2/19/2019      Tattoo: 974

SIRE: Connealy H6 427 (see sire data)

DAM: WA Commercial Black Angus Cow 27

Purebred Unregistered Black Angus Bull.

Weaning weight on 10/19/2019 of 680 pounds. Lot 27 photo below:





**SIRE DATA**  
**RB Black Ranger 458**



**Sire for Lot 28**

Reg # 17877012      Tattoo: 458      DOB: 02/2014

Connealy Tobin  
Connealy Confidence 0100  
Becka Gala of Conanga  
RB Black Ranger 458  
LCC New Standard  
R B Lady Standard 305-890  
B A Lady 6807 305

| CED | BW   | WW  | YW   | SC   | Milk | CW  | Marb | RE   |
|-----|------|-----|------|------|------|-----|------|------|
| +12 | -1.6 | +51 | +88  | -.45 | +27  | +35 | +.21 | +.88 |
| \$W | \$F  | \$G | \$B  |      |      |     |      |      |
| +64 | +101 | +37 | +139 |      |      |     |      |      |

A premier calving-ease bull that is a perfect sire choice for large heifer breeding projects for calving heifers and retaining replacement heifers produced by a dam with average progeny birth ratio of 3 at 89, average progeny weaning ratio of 3 at 108, an average progeny %IMF ratio of 110 at 101.

**LOT 28**

**WA Black Ranger 715**

Reg # 19711379      BW: 72 pounds      DOB: 2/09/2019      Tat: 900  
**SIRE: RB Black Ranger (AAA #17877012)** see sire data

Hoover Dam  
Garret's Hoover Dam 6512  
Pine Tree First Lady 651  
**DAM: WA Miss Priscilla HD 715**  
Dickaus Extra Ext 895  
Dickaus EE Dir 4097  
Dickaus Dir 726

| CED | BW   | WW  | YW   | Milk | CW  | Marb | RE   |
|-----|------|-----|------|------|-----|------|------|
| +9  | +0.1 | +44 | +86  | +25  | +30 | +.33 | +.59 |
| \$W | \$F  | \$G | \$B  |      |     |      |      |
| +42 | +96  | +38 | +134 |      |     |      |      |

This bull's dam is a first calf heifer.  
Weaned at 500 pounds.



**SIRE DATA**  
**3F Epic 4631**



**Sire for COMMERCIAL Lot 29**

Reg # 17950219      Tattoo: 4631      DOB: 01/25/2014

Connealy Final Product  
Varilek Product 2010 04  
Varilek Pearl 0006 014  
3F Epic 4631  
EF Compliment 8088  
Zebo Queen 1072  
EXG Blackcap 6247 PPC

| CED | BW   | WW  | YW   | SC   | Milk | CW  | Marb | RE   |
|-----|------|-----|------|------|------|-----|------|------|
| +8  | -0.1 | +85 | +159 | +.88 | +23  | +80 | +.72 | +.60 |
| \$W | \$F  | \$G | \$B  |      |      |     |      |      |
| +81 | +123 | +51 | +174 |      |      |     |      |      |

This \$50,000 Epic sire is among the top five sires for yearling weight EPD and carries both a weaning weight EPD and \$Feedlot value in the top ten of his breed.

**LOT 29**

Lot 29 is an Unregistered Purebred Commercial  
Angus Bull sired by 3F Epic 4631.

**WA COMMERCIAL Epic 714 96**

Reg # NA **BW: 60 pounds**      DOB: 2/04/2019      Tattoo: 96

**SIRE: 3F Epic 4631** (see sire data)

Hoover Dam  
Garret's Hoover Dam 6512  
Pine Tree First Lady 651  
**DAM: WA Miss Penelope HD 714**  
G A R US Premium Beef  
GOA Prem Beef Lass T105  
SUA New Design of Lass 5534

Purebred Unregistered Black Angus Bull.  
Weaned on 10/19/2019 at 580 pounds.  
Dam is a first calf heifer.





## SIRE DATA

### R B Tour of Duty 177



### Sire for COMMERCIAL Lots 30 & 31

Reg # 16984170      Tattoo: 177      DOB: 01/24/2011

Connealy Onward

Werner War Party 2417

BAAR USA Lady Jaye 489

R B Tour of Duty 177

Vermillion Dateline 7078

B A Lady 6807 305

G D Lady Hi Flyer 302

| CED | BW   | WW  | YW   | SC   | Milk | CW  | Marb | RE   |
|-----|------|-----|------|------|------|-----|------|------|
| +4  | +2.8 | +66 | +117 | +.36 | +33  | +56 | +.41 | +.89 |
| \$W | \$F  | \$G | \$B  |      |      |     |      |      |
| +69 | +95  | +53 | +148 |      |      |     |      |      |

The Number 1 sire of progeny registered by the American Angus Association during its 2017 fiscal year. Tour of Duty combines the three "Ps" of pedigree, performance and phenotype.

## LOT 30

Lot 30 is an Unregistered Purebred Commercial Angus Bull sired by RB Tour of Duty.

### WA COMMERCIAL Tour of Duty 401

Reg # NA BW: 90 pounds      DOB: 02/18/2019      Tattoo: 920

SIRE: RB Tour of Duty (see sire data)

DAM: WA Commercial Black Angus Cow 401

Purebred Unregistered Black Angus Bull.

Weaned on 10/19/2019 at 680 pounds.

## LOT 31

Lot 31 is an Unregistered Purebred Commercial Angus Bull sired by RB Tour of Duty.

### WA COMMERCIAL Tour of Duty 325

Reg # NA BW: 80 pounds      DOB: 2/16/2019      Tattoo: 916

SIRE: RB Tour of Duty (see sire data)

DAM: WA Commercial Black Angus Cow 325

Purebred Unregistered Black Angus Bull.

Weaned 10/19/2019 at 670 pounds.



## SIRE DATA

### WA Hoover Dam 77 748

### Sire for Lot 32, 33, & 34

Reg # 19074693

Tattoo: 748

DOB: 4/12/2017

Hoover Dam

Garret's Hoover Dam 6512

Pine Tree First Lady 651

WA Hoover Dam 77 748

Connealy Right Answer 6238

Poss Everelda 3263

DC RWPC Everelda W324

| CED | BW   | WW  | YW   | CEM | Milk |
|-----|------|-----|------|-----|------|
| +12 | -0.3 | +57 | +101 | +12 | +27  |
| \$W | \$F  | \$M | \$EN |     |      |
| +60 | +83  | +56 | -13  |     |      |

## LOT 32

Lot 32 is an Unregistered Purebred Commercial Angus Bull sired by WA Hoover Dam 77 748.

### WA COMMERCIAL Hoover Dam 58

Reg # NA BW: 80 pounds      DOB: 4/30/2019      Tattoo: 972

SIRE: WA Hoover Dam 77 748 (see sire data)

DAM: WA Commercial Black Angus Cow 58

Purebred Unregistered Black Angus Bull.

Weaned 10/19/2019 at 580 pounds.

## LOT 33

### WA Home Grown H D 721

Reg # 19711380      BW: 78 pounds      DOB: 3/10/2019      Tat: 934

SIRE: WA Hoover Dam 77 748 (AAA #19074693) see sire data

Hoover Dam

Garrets Hoover Dam 6512

Poss Everelda 3263

DAM: WA Miss Petra H D

KM Broken Bow 002

Dickaas BB 495

Dickaas OP IF 158

| CED | BW   | WW  | YW  | Milk | CW | Marb | RE |
|-----|------|-----|-----|------|----|------|----|
| +12 | +0.5 | +53 | +96 | +26  |    |      |    |
| \$W | \$F  | \$G | \$B |      |    |      |    |
| +54 | +79  |     |     |      |    |      |    |

Dam is a first calf heifer.

Weaned at 530 pounds.



**LOT 34**

**WA Home Grown H D 745**

Reg # 19709048 BW: 80 pounds DOB: 3/10/2019 Tat: 935  
**SIRE: WA Hoover Dam 77 748 (AAA #19074693)** see sire data

*HARB Efficient 819 JH*

*HARB RCA Efficient 23 JH*

*HARB RCA Princess Vel 03*

**DAM: WA Yannah Efficient 745 130**

*E&B National 618*

*WA National Yannah 55 130*

*W A Boyd's Annabelle 55*

| CED | BW   | WW  | YW  | Milk | CW | Marb | RE |
|-----|------|-----|-----|------|----|------|----|
| +9  | +1.8 | +57 | +90 | +26  |    |      |    |
| \$W | \$F  | \$G | \$B |      |    |      |    |
| +60 | +68  |     |     |      |    |      |    |

This bull weaned at 610 pounds. Dam is a first calf heifer.



**SIRE DATA**

**OCC Alternative 311**

**Sire for Lots 35, 36, & 37**

Reg # 17685708 Tattoo: 311 DOB: 2/8/2013

*HF Kodiak 5R*

*Soo Line Alternative 9127W*

*TLA Rosebud 4R*

OCC Alternative 311

*Mytty In Focus*

*OCC Lucy 832*

*Inniway Ms VRD 232*

| CED | BW   | WW  | YW   | SC    | Milk | CW  | Marb | RE   |
|-----|------|-----|------|-------|------|-----|------|------|
| +4  | +1.8 | +51 | +87  | +1.07 | +33  | +32 | +.85 | +.44 |
| \$W | \$F  | \$G | \$B  |       |      |     |      |      |
| +60 | +69  | +60 | +129 |       |      |     |      |      |

Albrecht Angus purchased this bull from Olson Angus in St. Ignatius, Montana. Excellent calving ease bull with the added bonus of excellent growth potential.

**LOT 35**

**7V Mr Alternative 133-911**

Reg # 19708803 BW: 84 pounds DOB: 3/15/2019 Tat: 911  
**SIRE: OCC Alternative 311 (AAA #17685708)** see sire data

*Woodhill Foresight*

*B/R Foresight 782*

*B/R Ruby of Tiffany 0251*

**DAM: 7V Ms Boyd's Foresight 133**

*Woodlawn New Limit 23*

*7V Ms Boyd Rito 53*

*7 V Ms Rito Play 982*

| CED | BW   | WW  | YW   | Milk | CW  | Marb | REA  |
|-----|------|-----|------|------|-----|------|------|
| +5  | +1.5 | +45 | +77  | +26  | +30 | +.73 | +.37 |
| \$W | \$F  | \$G | \$B  |      |     |      |      |
| +49 | +68  | +54 | +122 |      |     |      |      |

Weaned at 600 pounds.

**LOT 36**

Lot 36 is an Unregistered Purebred Commercial

Angus Bull sired by OCC Alternative 311

**7V COMMERCIAL Alternative 145-919**

Reg # NA BW: 84 pounds DOB: 3/22/2019 Tattoo: 919

**SIRE: OCC Alternative 311 (AAA #17685708)** see sire data

**DAM: 7V Commercial Black Angus Cow 145**

Purebred Unregistered Black Angus Bull.

Weaned at 590 pounds.

**LOT 37**

**7V Mr Alternative 373-927**

Reg # 19708804 BW: 86 pounds DOB: 3/26/2019 Tat: 927  
**SIRE: OCC Alternative 311 (AAA #17685708)** see sire data

*Connealy Cowboy 558*

*7V Cowboy H6 736*

*7V Ms H6 Fullback 736*

**DAM: 7V Forging Cowgirl 373**

*B/R Foresight 782*

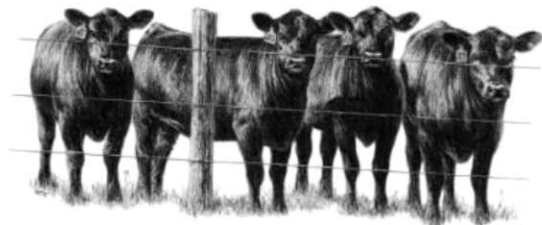
*7V Ms Forge Ahead 1015*

*7V Ms Boyd Classy 518*

| CED | BW   | WW  | YW  | Milk | CW | Marb | REA |
|-----|------|-----|-----|------|----|------|-----|
| +6  | +1.7 | +45 | +80 | +28  |    |      |     |
| \$W | \$F  | \$G | \$B |      |    |      |     |
| +48 | +67  |     |     |      |    |      |     |

Weaned at 602 pounds.

*Directions: The sale will be held at Watson Angus, located on the east side of the highway between mile markers 20 & 21 on Highway 97 in McPherson County, northwest of North Platte, NE. Signs will be posted to help you find your way! Watson Angus is 10 miles north of the traditional sale facility at Albrecht Angus.*





## SIRE DATA

### Q L C Valor X007 A018

Sire for Lots 38, 39, 40, 41, & 42

Reg # 17795176 Tattoo: AQ18 DOB: 9/19/2013

Sankeys Lazer 609 of 6N

Hy-View Phantom

Reidoca Barbara 515

Q L C Valor X007 A018

Thunder Grove Iron Mike 8153

Q L C Buttercup X007

Q L C C35 Elluna P078W

| CED | BW   | WW  | YW  | SC  | Milk | CW  | Marb | RE   |
|-----|------|-----|-----|-----|------|-----|------|------|
| +8  | -1.0 | +60 | +89 | +76 | +23  | +34 | +.46 | +.19 |
| \$W | \$F  | \$G | \$B |     |      |     |      |      |
| +67 | +66  | +29 | +95 |     |      |     |      |      |

Albrecht Angus purchased this bull from Walker Angus in Clay Center, Nebraska. Passing on calving ease traits with superior growth!

## LOT 38

### 7V Mr Valor 5-99

Reg # 19708801 BW: 78 pounds DOB: 3/10/2019 Tat: 99

SIRE: Q L C Valor X007 A018 (AAA #17795176) see sire data

B/R New Design 036

Genetics by Design 049

G G Clara 859

DAM: 7V Ms Genetics Design 5

TC Divident 963

7V MS T C Div Stockman 622

Baldrige Burgess 91

| CED | BW   | WW  | YW  | Milk | CW | Marb | RE |
|-----|------|-----|-----|------|----|------|----|
| +8  | -0.4 | +42 | +74 | +24  |    |      |    |
| \$W | \$F  | \$G | \$B |      |    |      |    |
| +43 | +61  |     |     |      |    |      |    |

Weaned at 555 pounds.

## LOT 39

### 7V Mr Valor 037-905

Reg # 19708802 BW: 80 pounds DOB: 3/12/2019 Tat: 905

SIRE: Q L C Valor X007 A018 (AAA #17795176) see sire data

D H D Traveler 6807

Duff Encore 702

O C C Dixie Erica 814G

DAM: 7V Ms Encore 037

T A R Contender Elite

7V Ms Contend F M 043

J D Blackcap 8201

| CED | BW   | WW  | YW   | Milk | CW  | Marb | RE   |
|-----|------|-----|------|------|-----|------|------|
| +5  | +0.1 | +41 | +72  | +18  | +22 | +.40 | +.28 |
| \$W | \$F  | \$G | \$B  |      |     |      |      |
| +34 | +70  | +33 | +103 |      |     |      |      |

Weaned at 575 pounds.

## LOT 40

Lot 40 is an Unregistered Purebred Commercial

Angus Bull sired by QLC Valor X007 A018

### 7V COMMERCIAL Valor 690-929

Reg # NA BW: 80 pounds DOB: 3/27/2019 Tattoo: 929

SIRE: Q L C Valor X007 A018 (AAA #17795176) see sire data

DAM: 7V Commercial Black Angus Cow 690

Purebred Unregistered Black Angus Bull.

Weaned at 588 pounds.

## LOT 41

### 7V Mr Valor 0124-925

Reg # 19708807 BW: 80 pounds DOB: 3/25/2019 Tat: 925

SIRE: Q L C Valor X007 A018 (AAA #17795176) see sire data

Boyd New Day 8005

Woodlawn New Limit 23

S V F Forever Lady 110J

DAM: 7V Ms Boyd 0124

Stepladder 365 790

7V Ms Stockman T 082

Seven V MS Erica T 200

| CED | BW   | WW  | YW  | Milk | CW  | Marb | RE   |
|-----|------|-----|-----|------|-----|------|------|
| +9  | -0.6 | +46 | +68 | +21  | +26 | +.45 | +.26 |
| \$W | \$F  | \$G | \$B |      |     |      |      |
| +49 | +60  | +35 | +95 |      |     |      |      |

Weaned at 600 pounds.

## LOT 42

### 7V Mr Valor 585-917

Reg # 19708806 BW: 80 pounds DOB: 3/20/2019 Tat: 917

SIRE: Q L C Valor X007 A018 (AAA #17795176) see sire data

Soo Line Alternative 9127W

OCC Alternative 311

OCC Lucy 832

DAM: 7V Alternate Equator 585

Woodlawn New Limit 23

7V Ms Boyd's Equator 815

7 V Ms Equator

| CED | BW   | WW  | YW  | Milk | CW | Marb | RE |
|-----|------|-----|-----|------|----|------|----|
| +3  | +1.2 | +57 | +94 | +25  |    |      |    |
| \$W | \$F  | \$G | \$B |      |    |      |    |
| +59 | +67  |     |     |      |    |      |    |

Weaned at 605 pounds.







## SIRE DATA

### 7V Exclusive Paxton 725C

Sire for Lots 43, 44, 45, 46, & 47

Reg # 18383570      Tattoo: 50      DOB: 1/31/2015

*O C C Focus 813F*

*O C C Paxton 730P*

*O C C Blackbird 736K*

*7V Exclusive Paxton 725C*

*Woodlawn New Limit 23*

*7V Ms Boyd Design 725*

*BT Blackbird 76R*

| CED | BW   | WW  | YW  | SC | Milk | CW | Marb | REA  |
|-----|------|-----|-----|----|------|----|------|------|
| +14 | -1.8 | +38 | +64 | -  | +18  | +6 | +.15 | +.31 |
| \$W | \$F  | \$G | \$B |    |      |    |      |      |
| +38 | +29  | +23 | +52 |    |      |    |      |      |

This 7V home raised bull has proven to be an effective calving ease bull, siring many of the Albrecht Angus first-calf heifers' calves in the 2017 & 2018 calving years. Great calving ease bull.

## LOT 43

### 7V Mr Paxton 870-939

Reg # 19708805      BW: 78 pounds      DOB: 4/1/2019      Tat: 939

SIRE: 7V Exclusive Paxton 725C (AAA #18383570) see sire data

*Basin Max 602C*

*L Bar L Basin Max 416*

*B/R Pride 762*

DAM: 7V Ms Max Canyon 870

*7 V Canyon Fix 020*

*7V Ms Canyon Courtyard 425*

*7 V Ms Courtyard Ease 120*

| CED | BW   | WW  | YW  | Milk | CW | Marb | RE   |
|-----|------|-----|-----|------|----|------|------|
| +9  | -0.5 | +40 | +58 | +16  | +9 | +.21 | +.18 |
| \$W | \$F  | \$G | \$B |      |    |      |      |
| +36 | +34  | +24 | +58 |      |    |      |      |

Weaned at 610 pounds.

## LOT 44

### 7V Mr Paxton 2006-940

Reg # 19708808      BW: 78 pounds      DOB: 4/1/2019      Tat: 940

SIRE: 7V Exclusive Paxton 725C (AAA #18383570) see sire data

*Duff New Edition 6108*

*Boss Edition 9132*

*DCC Dixie Erica 001*

DAM: 7V Ms Full Edition 2006

*Connealy H6 427*

*7V Ms Fullback 736*

*7 V Ms High H Fullback 03*

| CED | BW   | WW  | YW  | Milk | CW | Marb | RE |
|-----|------|-----|-----|------|----|------|----|
| +7  | +0.4 | +38 | +66 | +18  |    |      |    |
| \$W | \$F  | \$G | \$B |      |    |      |    |
| +31 | +55  |     |     |      |    |      |    |

Weaned at 558 pounds.

## LOT 45

Lot 45 is an Unregistered Purebred Commercial Angus Bull sired by 7V Exclusive Paxton 725C.

### 7V COMMERCIAL Exclusive 7013-943

Reg # commercial      BW: 76 pounds

DOB: 4/2/2019      Tattoo: 943

SIRE: 7V Exclusive Paxton 725C (see sire data)

DAM: 7V Commercial Black Angus

First Calf Heifer 7013

Purebred Unregistered Black Angus Bull.

Weaning weight 610 pounds.

## LOT 46

Lot 46 is an Unregistered Purebred Commercial Angus Bull sired by 7V Exclusive Paxton 725C.

### 7V COMMERCIAL Exclusive 7036-951

Reg # commercial      BW: 78 pounds

DOB: 4/11/2019      Tattoo: 951

SIRE: 7V Exclusive Paxton 725C (see sire data)

DAM: 7V Commercial Black Angus

First Calf Heifer 7036

Purebred Unregistered Black Angus Bull.

Weaning weight 525 pounds.

## LOT 47

Lot 47 is an Unregistered Purebred Commercial Angus Bull sired by 7V Exclusive Paxton 725C.

### 7V COMMERCIAL Exclusive 7055-946

Reg # commercial      BW: 80 pounds

DOB: 4/9/2019      Tattoo: 946

SIRE: 7V Exclusive Paxton 725C (see sire data)

DAM: 7V Commercial Black Angus

First Calf Heifer 7055

Purebred Unregistered Black Angus Bull.

Weaning weight 530 pounds.

Catalog designed by LAW Creations 2020





Watson Angus Ranch  
170 Watson Drive  
North Platte, NE 69101  
308-587-2520  
[www.watsoncattle.com](http://www.watsoncattle.com)